

SPECIFICATIONS

Processor	AMD Geode™ LX 800
Memory (flash)	64MB – 4GB
Memory (RAM)	128MB – 1GB
Software Operating Systems	Windows CE; Windows XP Embedded; Windows XP Professional; Embedded Linux Thin Client
Storage	Internal flash module or Internal HDD; External USB
Display Resolution	Up to 1920 x 1440 (85Hz)
Expansion	Mini-PCI (internal); USB
Control Buttons	One (1) front Power button
Input/Output Ports	12V DC-in Jack; Microphone-In; Audio-Out Jack; USB 2.0 Ports (4); Parallel (1); Serial (2); 10/100 BaseT Ethernet; VGA; Antenna for optional WLAN Adapter
Enclosure	Aluminum chassis; ABS Plastic end-caps
Dimensions (H x W x D)	1.8 x 5.7 x 5.1 (in) 46 x 144 x 130 (mm)
Base Weight	1.45lb (660g)
AC/DC adapter	Input: 90-240VAC Output: 12VDC, 1.2A
Power Plugs	North America, EU, UK
Regulatory	FCC Class B, CE
Operating Temperature	0° – 40°C
Humidity	0% – 90% non-condensing



DT Research, Inc.
368 Montague Expressway
Milpitas, CA 95035 USA

tel 408.934.6155
fax 408.934.6222

BASIC OPERATION GUIDE



INTRODUCTION

Thank you for acquiring the latest addition to DT Research's line of thin client devices—the WebDT 168, featuring a compact and robust design powered by the AMD Geode™ processor and providing effective solutions for a broad range of computing needs.

The WebDT 168 supports major embedded operating systems as well as Windows XP. The user is offered a choice of software solutions on a platform characterized by the following:

- ▶ High-integration and energy-efficient processor technology
- ▶ Robust and fan-less construction for quiet and reliable operation
- ▶ Low-cost computing in compact yet comprehensive packaging



Package Contents

- ▶ WebDT 168 System
- ▶ Base/Stand
- ▶ AC/DC Power Adapter
- ▶ Basic Operation Guide

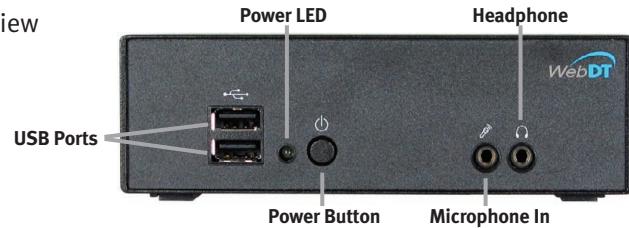


Precautions

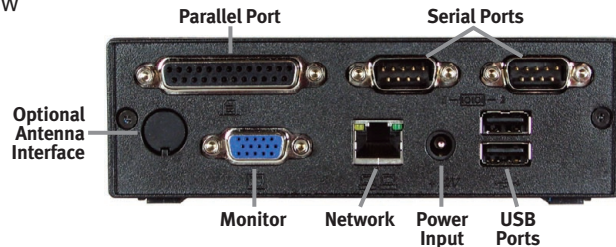
- ▶ Always exercise care when operating and handling the WebDT 168.
- ▶ Never disassemble any portion of the enclosure. It will void any product warranty on the WebDT 168.
- ▶ Do not use any AC/DC adapter other than the one provided with the device or acquired from the manufacturer or its partners.
- ▶ In the unlikely event that smoke, abnormal noise, or strange odor is present, immediately power down the WebDT 168 and disconnect all power sources. Please report the problem to your device provider immediately.

THE WebDT 168

WebDT 168 – Front View



WebDT 168 – Rear View



Powering ON and OFF

The Power Button is located in the front of the WebDT 168. The Power Button may be configured to behave differently depending on the operating software. In general, to turn the WebDT 168 on, push and release the Power Button on the front bezel. The adjacent power LED will be lit (blue) and the corresponding interface will be displayed on the display monitor.

To turn off the device, again depending on software operating system, push and release the Power Button or use a software shutdown interface.

In the event of system lockup, the Power Button may be used to perform a reset on the device. To do that, push and hold the Power Button for at least 4 seconds. The system will shut down and all unsaved work may be lost. Pushing on the Power Button again will restart the device.

Device Ports

The WebDT 168 features a comprehensive set of I/O ports while preserving the compact size of the enclosure. The VGA, Network (10/100 BaseT Ethernet), and Power ports are supplemented by a set of two (2) Serial, one (1) Parallel, four (4) USB 2.0 and Audio ports.

Through these USB, Serial, and Parallel ports, the WebDT 168 supports a wide range of peripherals. These peripherals are applicable in providing the means for function enhancements, software installation, application storage, data storage, and system software recovery and updates.

Memory and Storage

The WebDT 168 may be available in memory configurations ranging from 64MB of flash memory to 4GB of flash.

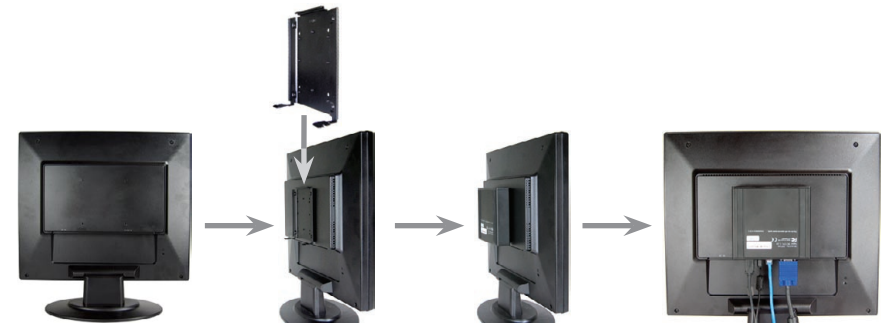
Depending on base software configuration, the user may use up the internal flash memory of the WebDT 168 for the user's installed software and storage. The user may also supplement storage space with USB-based peripherals such as flash disks, disk drives, etc.

RAM capacity ranges from 128MB to 1GB.

OPTIONS

The WebDT 168 is designed to work with a range of custom and off-the-shelf options to enhance its applicability for various deployments.

- ▶ USB-to-Serial and USB-to-PS/2 adapters
- ▶ Bracket and Cable for Internal Hard Disk Drive (HDD) Mounting
- ▶ Internal (mini-PCI) and External (USB) wireless LAN (WLAN) adapters
- ▶ Short VGA cable for connection to mounted display
- ▶ External bracket for mounting the WebDT 168 to VESA adapters and LCD monitors (see mounting process below)



It is quite simple to mount the WebDT 168 to VESA adapters or LCD monitors using the external mounting bracket.